



Greetings,

Is your company or organization going green? Are you looking to learn about and support local environmental efforts as part of a larger strategy for 'giving back' to the community?

More and more Arizona cities, counties, and companies are looking to offer more choice in their community giving in addition to the traditional campaign, and the Environmental Fund for Arizona is Arizona's 'green' choice in workplace giving.

As a coalition, we can connect you with 29 of the leading environmental and conservation organizations across the state -- all working to improve Arizona's environment through:

- wildlife rehabilitation
- open space preservation and land management
- sustainable growth
- renewable energy
- recycling
- native plants and
- environmental education

Since 2001, the Environmental Fund for Arizona has raised over \$500,000 in donations through our workplace giving campaigns. Our groups contribute to the health and quality of life of Arizonans by working to protect our air and water, open spaces and recreation areas, and natural/historical/cultural resources.

The following pages highlight our member organizations, the value of a 'green' campaign, company benefits, and more. We would value the opportunity to start or participate in your workplace giving campaign as a partner in supporting Arizona's environment.

Please feel free to contact us to arrange an appointment to discuss the benefits of offering a 'green' choice in your workplace with Environmental Fund for Arizona. I look forward to working with you.

Sincerely,



Laine Seaton  
Executive Director

[www.efaz.org](http://www.efaz.org)





# ■ ENVIRONMENTAL FUND FOR ARIZONA – Brief Overview

## Who We Are

The Environmental Fund for Arizona is a nonprofit, 501(c)(3) organization that serves to raise awareness and fundraise for our 29 member organizations through workplace giving campaigns. Our mission is to help our member groups protect and improve the environment in Arizona and to preserve our quality of life for present and future generations.

As a coalition, we're able to connect employees with the environmental causes they're most passionate about, and give them an opportunity to donate, volunteer, and learn more about the critical environmental issues facing Arizona today.

## What We Do

The Environmental Fund for Arizona represents our 29 member organizations through workplace giving campaigns across the state. We run campaigns along-side traditional federations including the United Way, and others including Community Health Charities, America's Charities, and Global Impact. What makes us unique is that we're the only "green" coalition in workplace giving in Arizona.

Since 2001, the Environmental Fund for Arizona has raised over \$500,000 in workplace giving for our member organizations.

## How You Can Help

You can be a part of preserving and protecting Arizona's environment by starting or adding the Environmental Fund for Arizona to your workplace giving campaign. **Our Campaign Toolkit** makes it simple, and provides everything you need for a successful campaign. You may also donate directly by designating one or more of our member organizations, or with a general gift to EFAZ, your donation will be distributed equally among all of our member groups.

Contact us at: [laine@efaz.org](mailto:laine@efaz.org) for more information or visit [www.efaz.org](http://www.efaz.org).

## OUR CURRENT CAMPAIGNS



- American Express
- Ameriprise
- United Health
- JP Morgan Chase
- Wells Fargo
- State of AZ
- Arizona CFC (Federal employees)
- Maricopa County CFC
- Maricopa County
- Coconino County
- Pima County
- City of Chandler
- City of Scottsdale
- City of Mesa
- Town of Queen Creek
- Southwest College of Naturopathic Medicine
- Maricopa Community Colleges District

*Thank you*



## ■ How Do We Run An EFAZ Campaign?

The simple answer is however you want. Whether you're just starting a workplace giving program or integrating an environmental choice into an existing program, a campaign with EFAZ makes it easy.

You know your company or organization culture the best, so your EFAZ campaign can be as active or low-key as you wish. Our **Campaign Toolkit** will help you get started with guidance for organizing the campaign, fun ideas to get people energized, and promotional materials including environmental quizzes and more! We're here to help you every step of the way.



**"Once a piece of the desert is gone, it's gone. The Sonoran Desert remains as some of God's best work. Our job, as stewards of this little part of the world, is to preserve it for the future. If we don't do this now, our children and grandchildren may never get the chance."**

**– Phoenix Mayor, Phil Gordon**

## What's In It For Us?

Aside from the obvious benefit of improving our environment and being part of the solution, becoming an EFAZ Campaign Partner not only connects you with 29 of the leading environmental organizations across the state, but your support will be recognized throughout the year. Campaign Partner benefits include:

- **Logo/link on EFAZ website**
- **Featured spotlight in EFAZ e-newsletters**
- **Featured spotlight in EFAZ Annual Reports**
- **Company recognition in EFAZ press releases**
- **Invitation to EFAZ Campaign Kickoff and Wrap-up events**
- **Invitation to EFAZ special events and sponsorship opportunities**
- **Recognition for Campaign of the Year and Coordinator of the Year**
- **B-to-B opportunities with our 29 members and additional 'green' partner businesses**
- **EFAZ Speakers Bureau and brown bag lunch presentations**
- **Employee tours at member group facilities**
- **Volunteer opportunities and more**



# ■ ENVIRONMENTAL FUND FOR ARIZONA

## Member Agency Descriptions

### • **Arboretum at Flagstaff:**

[www.thearb.org](http://www.thearb.org). The Arboretum at Flagstaff works to increase understanding and conservation of plants native to the Colorado Plateau, use scientific research to solve conservation problems, and develop programs to promote environmental stewardship.

### • **Arizona Association for Environmental Education:**

[www.arizonaee.org](http://www.arizonaee.org). AAEE supports educators in their efforts to motivate Arizonans to live responsibly and promote the use of environmental curriculums and field training for educators.

### • **Arizona Heritage Alliance:**

[www.azheritage.org](http://www.azheritage.org). Arizona Heritage Alliance is a coalition of groups, individuals, government and tribal entities, and businesses who work together to protect, preserve, and enhance the Arizona Heritage Fund.

### • **Arizona Land & Water Trust:**

[www.alwt.org](http://www.alwt.org). Arizona Land and Water Trust works closely with local, state and federal agencies, as well as private landowners and land trusts, to protect Arizona's vanishing landscapes and wildlife habitat. The Trust helps its public and private partners achieve their specific land protection goals by providing risk capital, effective negotiation, legal skills and leverage of limited funding.

### • **Arizona League of Conservation Voters Education Fund:**

[www.azlcv.org](http://www.azlcv.org). AZLCV Education Fund seeks to build an informed citizenry that protect Arizona's natural heritage and environmental health in the belief that an educated voter is a conservation voter.

### • **Arizona Native Plant Society:**

[www.aznps.org](http://www.aznps.org). Arizona Native Plant Society provides opportunities for public participation in learning about and protecting Arizona's native plants and habitat through speakers, workshops, special events, projects and field trips.

### • **Arizona Recycling Coalition:**

[www.arizonarecyclingcoalition.com](http://www.arizonarecyclingcoalition.com). The Arizona Recycling Coalition promotes the three R's: Reduce, Re-Use, and Recycling. Improving the three R's decreases energy usage and the resulting air quality issues, decreases the loss of open space to disposal, and improves local economies. The AZ Recycling Coalition helps bring the know-how of recycling to the State and local level for the benefit of all citizens.

### • **Arizona Wildlife Federation:**

[www.azwildlife.org](http://www.azwildlife.org). Arizona Wildlife Federation is a sportsmen's organization and National Wildlife Federation chapter, founded in 1923 to promote the management of Arizona's natural resources based upon sound scientific study.

### • **Audubon Arizona:**

<http://az.audubon.org>. Audubon Arizona protects Arizona's birds, other wildlife, and critical habitats through science-based conservation, education, and advocacy for the benefit of humanity and the Earth's biological diversity.

### • **Desert Botanical Garden:**

[www.dbg.org](http://www.dbg.org). Desert Botanical Garden saves and protects the Sonoran Desert's rare, threatened, and endangered plants, and educates children and families about the importance of desert plants.

# ■ ENVIRONMENTAL FUND FOR ARIZONA

## Member Agency Descriptions (Continued)

- **Desert Foothills Land Trust:**

[www.dflt.org](http://www.dflt.org). Desert Foothills Land Trust works with communities and partners to protect sensitive lands and species for the survival of the fragile Sonoran Desert.

- **Four Corners School of Outdoor Education:**

[www.fourcornersschool.org](http://www.fourcornersschool.org). Four Corners School of Outdoor Education uses the Colorado Plateau as an outdoor classroom for all ages/backgrounds to provide education, service, conservation, adventure programs.

- **Grand Canyon Trust:**

[www.grandcanyontrust.org](http://www.grandcanyontrust.org). Grand Canyon Trust protects and restores the Grand Canyon and canyon country of the Colorado Plateau--its spectacular landscapes, flowing rivers, clean air, and diversity of plants and animals.

- **Grand Canyon Wildlands Council:**

[www.grandcanyonwildlands.org](http://www.grandcanyonwildlands.org). The mission of the Wildlands Council is to create and apply a dynamic conservation area network that ensures the existence, health, and sustainability of all native species and natural ecosystems in the Grand Canyon ecoregion.

- **Gray Hawk Nature Center:**

[www.grayhawknaturecenter.org](http://www.grayhawknaturecenter.org). Gray Hawk Nature Center is an educational facility located on the San Pedro River working to promote understanding, appreciation, and stewardship of the natural world through hands-on experiential learning.

- **Liberty Wildlife:**

[www.libertywildlife.org](http://www.libertywildlife.org). Liberty Wildlife works to rehabilitate native wildlife with the goal of returning them to their natural habitat, and provides educational programs on conservation and wildlife issues in schools and other venues. speakers, workshops, special events, projects and field trips.

- **Maricopa Audubon Society:**

[www.maricopaaudubon.org](http://www.maricopaaudubon.org). MAS is a 3,000-member chapter of the National Audubon Society, dedicated to providing Audubon activities within the Phoenix-Metro area and beyond. MAS works to protect birds, wildlife, and habitat through education and outreach.

- **McDowell Sonoran Conservancy:**

[www.mcdowellsonoran.org](http://www.mcdowellsonoran.org). Since its inception, MSC has spearheaded the creation of a 36,400 acre preserve in Northeast Maricopa County. MSC works to fulfill its mission through advocacy, education, and stewardship programs.

- **Museum of Northern Arizona:**

[www.musnaz.org](http://www.musnaz.org). The Museum of Northern Arizona serves children and adults by exploring, studying, interpreting and conserving the natural and cultural resources of the Colorado Plateau region.

- **Native Seeds/SEARCH**

[www.nativeseeds.org](http://www.nativeseeds.org). Native Seeds/SEARCH conserves, distributes, and documents the uses of agricultural seed native to the Southwest and promotes the use of these arid and heat adaptive plants.

# ■ ENVIRONMENTAL FUND FOR ARIZONA

## Member Agency Descriptions (Continued)

- **Oracle Land Trust:**

[www.oraclelandtrust.org](http://www.oraclelandtrust.org). Oracle Land Trust protects and cultivates the rural character and beauty of the lands and resources in the Oracle area for the continuing benefit of all citizens

- **Sonoran Audubon:**

[www.sonoranaudubon.org](http://www.sonoranaudubon.org). Sonoran Audubon is Maricopa County's west valley chapter focusing on community education, support, and involvement on issues pertaining to birds, wildlife, and complex interactions needed for a healthy environment.

- **Sonoran Institute:**

[www.sonoraninstitute.org](http://www.sonoraninstitute.org). Sonoran Institute is a leader in collaborative conservation, working with diverse groups and communities across the West to forge creative solutions to shared environmental challenges.

- **Southwest Wildlife Rehabilitation & Education Foundation:**

[www.southwestwildlife.org](http://www.southwestwildlife.org). Southwest Wildlife is a non-profit organization specializing in rehabilitation of large mammals native to Arizona and educating youth on the importance of wildlife and the environment.

- **Trout Unlimited:**

[www.tu.org](http://www.tu.org). Trout Unlimited works to conserve, protect and restore North America's coldwater fisheries and their watersheds. In Arizona, TU is actively protecting threatened Apache and Gila Trout and public lands..

- **Tucson Audubon:**

[www.tucsonaudubon.org](http://www.tucsonaudubon.org). Tucson Audubon is dedicated to improving the quality of the environment by providing education, conservation and recreation programs as well environmental leadership throughout south-eastern Arizona speakers, workshops, special events, projects and field trips.

- **Western Resources Advocates:**

[www.westernresourcesadvocates.org](http://www.westernresourcesadvocates.org). Western Resource Advocates (WRA) protects the West's land, air, and water. WRA defends public lands, promotes water conservation, restores rivers, and advances clean energy production.

- **Wild At Heart:**

[www.wildatheartowls.org](http://www.wildatheartowls.org). WAH is an all-volunteer organization dedicated to the preservation of Arizona's birds of prey through the rescue and rehabilitation of injured birds, public education, and restoration of habitat.

- **Willow Bend Environmental Education Center:**

[www.willowbendcenter.org](http://www.willowbendcenter.org). Willow Bend Environmental Education Center is committed to place-based environmental education that fosters an ethic of stewardship and responsibility by deepening people's understanding of and connections to nature.



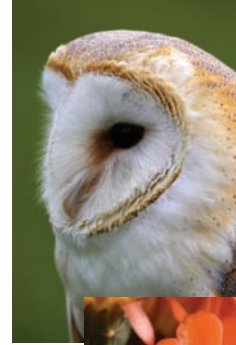


## ■ What Your Dollars Accomplish

Every dollar that you donate to EFAZ truly makes a difference for Arizona's environment. Here are just a few examples of what your dollars accomplish!

### • Just \$1 per pay period will help to:

- Feed one owl, coyote, bobcat for one month.
- Place two hands-on environmental science activity kits in a classroom.
- Provide two backpacks filled with items from recycled materials.
- Fund environmental lesson plan books for a teacher.
- Offer four students place-based, environmental education programs.



### • Just \$2 per pay period will help to:

- Provide one classroom a quality field trip experience including outdoor science activities.
- Provide a month's supply of food for a mountain lion, bear, large owl and hawk.
- Provide a day of support for a crew of students volunteering their service in our National Parks for maintenance and community outreach.
- Provide posters and other educational materials to classrooms, teaching about native gardens.



### • Just \$10 per pay period will help to:

- Provide a year's supply of food for a fox, ringtail, and javelina.
- Host a free local workshop for 35 farmers on methods to save their farms and their farming community.
- Purchase of native plant seeds to give away at events to promote using natives in the landscape.
- Remove 1000 non-native crayfish from streams on the Mogollon Rim – protecting Little Colorado Spinedace species.
- Fund three days of professional development for a teacher.
- Create one environmental education kit for students and teachers.



### • Just \$20 per pay period will help to:

- Develop educational materials to help people understand the importance of "growing native" in our landscapes, which in turn extend the natural corridors through urban areas for our native wildlife including pollinators like bees, beetles, bats, birds, moths, and butterflies.
- Start 200 new cuttings of Goodding's willow trees for planting at a riparian restoration site along the Colorado River in Glen Canyon.
- Fund half of a science resource center for a school for one year.
- Develop one in-classroom environmental education program.







environmental fund for arizona  
**efaz**

## Why Choose the Environmental Fund For Arizona?



*"Arizona has become supremely urban. But the heartbeat of the state, its greatest asset, is land. It's not just about what you can raise – corn, cotton, cattle. It's so much more than that. It's our open spaces, our healthy watersheds, our forests. The urban areas are just punctuation, to me, on the landscapes. If we lose the landscape, all bets are off for the future of the state."*

**– Mandy Metzger,  
Coconino County Supervisor, District 4, Flagstaff**

### Including an environmental choice in your workplace giving campaign...

#### ...Improves Your Community

Preserving our beautiful open spaces, protecting our national treasures like the Grand Canyon and Sonoran Desert, finding better ways to develop our communities, and improving the quality of our air and water are just some of the ways that Environmental Fund for Arizona member groups are making life better for Arizonans. Your support of EFAZ through a workplace campaign makes a direct impact on the health of our environment.

#### ...Improves Community Relations

With anything 'green' or 'sustainable' as the popular trend these days, Including an environmental choice to your workplace campaign is an authentic way to 'walk the talk' in supporting critical work to improve our environment. In addition, workplace campaigns are an effective, low cost tool to enhance an employer's image among employees and the general public.

#### ...Increases Employee Giving

Too often employees see their workplace campaigns as an employer's 'choice' -- an institutional program implemented from the top-down. By including a wider selection of charitable organizations, employee participation rates and overall donations have been shown to increase. When American Express expanded its campaign to include other federations in 2001, donations increased by \$800,000 and participation increased from 47% to more than 60%.

#### ...Shows That You're Listening

Over 3,600 Arizona leaders, stakeholders, and residents were interviewed for ***The Arizona We Want*** report, and among the findings, citizens affirmed that the state's natural beauty and open spaces are seen as our greatest asset. On the most important factors for quality of life, **47% noted the beauty or physical setting**, and **44% noted the availability of parks, playgrounds, and trails**.



# Expanded Choice Leads to Increased Giving

*Our American Express employees love seeing the wildlife and other environmental groups as part of our campaign each year. Including EFAZ in our campaign not only offers employees more choice, but it shows them the variety of important environmental and conservation work being done across Arizona."*

**American Express – David Dumins**



## Expanded Choice Works

Workplace campaigns that offer expanded choice generate more support for the community, and studies have shown that employees do want expanded choice of options in their workplace campaigns. When given additional options, *overall giving increases.*

Allowing donors to designate their funding to other groups has proven to help all charitable organizations. With over 13,000 nonprofit charitable organizations in Arizona, limiting giving to United Way-only charities leaves a significant area of community needs unrecognized including:

- **The environment**
- **Health & Research**
- **The arts**
- **Animal welfare**

## Why 'Donor Choice' Doesn't Work

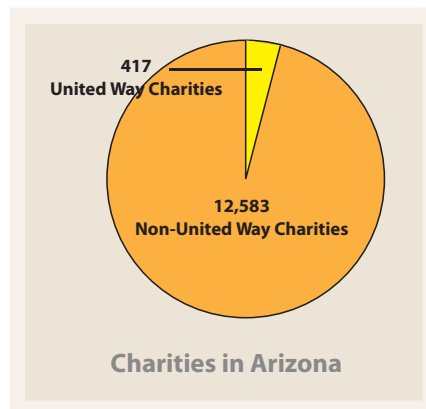
When employers allow a single federation to run their campaign, any other federation or charity often gets left to the sidelines.

Employees often don't know about additional choices available, and the 'Donor Choice' option on many United Way pledge cards make it difficult to truly give to non-United Way charities. Reasons include:

- **A minimum donation of \$25-\$100 required**
- **Restrictions to only health & human services charities as determined by United Way**

- **Exclusion of all other federations including EFAZ, Community Health Charities, Global Impact, and others**

The easiest way to assure equal choice and representation of *all* charities is for employers to manage their own campaigns. Employer-driven charity listings, pledge cards, and donation processing allows for more equitable representation of all organizations.





## ■ Case Studies for Expanded Choice in Giving



### Pitney Bowes – Combined Campaign Model

Pitney Bowes conducted an assessment of its community giving program with the goal to enhance employee participation as well as strengthen relations with employees. Resulting surveys indicated that employees wanted additional charities to participate in the campaign. The result was a redesigned campaign that included four additional federations of nonprofit organizations including America's Charities, Community Health Charities, Earth Share and International Service Agencies. Pitney Bowes agreed to a 50 percent match of the funds raised by employees. The result was \$300,000 new dollars raised in the first year Pitney Bowes Employees' Giving Campaign—a 7 percent increase in total contributions, as well as an increase in participation.

"At Pitney Bowes we give ownership of the campaign to our employees," states Rich Palladino, corporate director of employee giving and volunteerism at Pitney Bowes. "Once we asked them what they wanted in a workplace giving program and they responded, it was obvious what we needed to do."

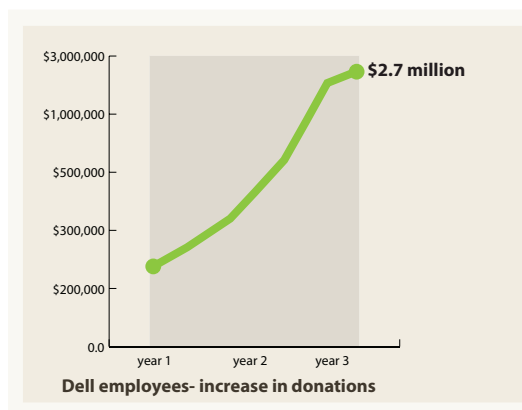
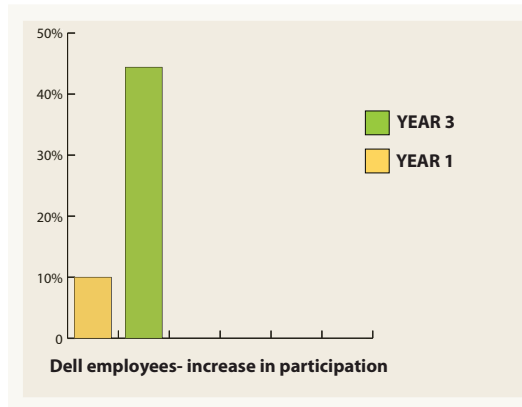


### Dell Computers – Integrated Campaign

The employee workplace campaign is a key component of the corporate philanthropy program at Dell Computers. However, the campaign at Dell had become a routine administrative function without much thought as to the full potential it represented.

Responding to employee interests, Dell assessed its employee workplace campaign and expanded it to include other nonprofit organizations such as America's Charities, Earth Share and International Service Agencies. The result was phenomenal. Participation, leadership givers, and the number of employees engaging in volunteer activities all increased. In three years, employee participation at Dell increased from 10 percent to 45 percent.

Total giving jumped from \$220,000 to \$2.7 million. Michele Glaze, Manager of the Dell Foundation says: "At Dell we developed a campaign that got our employees excited." Giving to all nonprofit organizations, including United Way, went up after the new campaign model was introduced.



According to the 2000 TCN (The Consulting Network) Valuing Employee Involvement report, giving and employee participation increase when organizations in addition to United Way are included in the campaign. Employee participation increased in 76 percent of the companies that offered a broader range of giving options, and total contributions increased in more than 90 percent of the companies that offered additional nonprofit organizations in their campaign.



## ■ Frequently Asked Questions

### **Q. How does Environmental Fund for Arizona (EFAZ) differ from other workplace giving programs?**

We are the only federation of environmental and conservation groups in workplace campaigns in Arizona. Our 29 member organizations represent a wide variety of critical issues that affect Arizona's environment.

### **Q. If we don't already have a workplace campaign, how can we start one?**

The process is simple. If you have the mechanism for deducting taxes, payroll savings, or retirement, you have the ability to add a payroll giving option. EFAZ will work with you to determine the best way to introduce the campaign to your employees. Our campaigns are straightforward and professional. Distribution of contributions to individual agencies is the responsibility of EFAZ. You simply send cumulative deduction checks to us for disbursement.

### **Q. We already have an employee giving campaign in place. Won't adding an EFAZ campaign take funds away from our current efforts?**

Actually, it's the exact opposite – expanding employee giving choices has proven historically to increase employee participation and donations across the board. We've seen that when employees are given more choice and control over where and how they donate, they are more inclined to give.

### **Q. Our employees already contribute to United Way. So why should we consider EFAZ?**

While United Way funds a wide array of social service and welfare agencies, they do not fund environmental or conservation organizations. Because a healthy environment is a critical

part of quality of life, offering employees an expanded choice through EFAZ is the ideal way to add an environmental component to your employee giving efforts, while maintaining your relationship with United Way.

### **Q. If we decide to include EFAZ, will we have to set up a whole new campaign?**

Absolutely not. EFAZ successfully participates with many other federations in side-by-side campaigns, which typically leads to an increase in total donations. We can provide our own pledge cards or modify existing cards to make the process simpler. Employees appreciate being given more choice!

### **Q. How much extra work is involved if we include EFAZ in our campaign?**

EFAZ will meet with you and/or your payroll department to discuss how we can enhance your existing campaign without increasing your workload or costs. We're here to help with every aspect of your campaign – from campaign materials to training the employees who will manage the process. It is our goal to make your EFAZ campaign as easy and hassle-free as possible.

### **Q. Our company encourages employees to give on their own, so do we really need an EFAZ campaign?**

Payroll deduction is a more convenient way for your employees to make charitable contributions, enabling them to spread their donations throughout the year. In fact, a payroll deduction gift is generally 4 to 6 times greater than a one-time cash contribution! Most employees consider payroll deduction to be a valuable company benefit. It truly is the most effective and efficient way to raise needed not-for-profit dollars

## ■ Frequently Asked Questions (Continued)

### **Q. How does EFAZ fit into our guidelines restricting campaigns to “health and human services”?**

EFAZ has been accepted into many campaigns where this guideline is used, in both the public and private sector. Human health is dependent upon environmental health. Our agencies protect health and human welfare in the most fundamental way. Finding alternatives to pesticides, creating renewable energy sources, and implementing low-impact technologies are a few examples of efforts that help to ensure human health, as well as the health of the planet. Quality of life is enhanced through the protection of open space areas and the conservation of species diversity.

### **Q. Why not utilize the “Donor Choice” approach provided by a single federation to allow employees to give to any agency?**

Unfortunately, the Donor Choice concept does not work out in practice. According to a study by the National Committee for Responsive Philanthropy in Washington D.C., fewer than 6% of total dollars collected in a campaign will be via Donor Choice. The biggest barrier to employees taking advantage of this system is the lack of information about charities not included in the campaign print materials. Providing real choice means offering employees the information they need to make a good decision. Multiple-federation campaigns provide that information and encourage employees to decide for themselves.

### **Q. What are the advantages and disadvantages of outsourcing our overall campaign management to one federation?**

The advantages are typically described in terms of savings to your company in terms of additional staff duties and donation processing time. However, the disadvantages

are many. The most significant disadvantage is an unnecessary level of bureaucracy that adds to overhead costs. Typically the contractor to charge a fee on every donation made, even if it is not intended for an agency represented by their federation. There are now TWO overhead charges applied to any donation made to a charity outside of the contractor's federation, resulting in a strong dis-incentive for employees to choose from the full array of nonprofits. Moreover, visibility and equal representation of the variety of choices included in the campaign are often lost in the shadow of a managing federation. Too often the campaign comes to look like a single federation promoting its members, with a footnote about added choices.

### **Q. Does EFAZ charge an administrative fee for processing its donations?**

Yes. We charge 12% in public (govt.) campaigns and 10% in private (company, etc.) campaigns. Most federations, including United Way, charge between 10-15%.

### **Q. Can I give a general gift to EFAZ?**

Yes. A general gift to EFAZ will be divided equally among our 29 member organizations so everyone benefits

### **Q. Can I hold a fundraiser for EFAZ outside of workplace giving?**

Absolutely! We value connecting with communities in fun and creative ways.

Please contact:

**Laine Seaton at [laine@EFAZ.org](mailto:laine@EFAZ.org)**

for more information.

# Policies of Environmental Fund for Arizona

## Annual Review of Member Groups

Each year, the Environmental Fund for Arizona reviews the activities, accomplishments, management and accounting of its member organizations. To participate in payroll deduction campaigns, members must meet all requirements for income/expense statements, program accomplishments, and mission definitions

## Fiscal Accountability

Environmental Fund for Arizona complies with Federal regulations 501(c)(3) and the State of Arizona. All contributions to The Fund are tax-deductible. An independent audit is performed regularly by a Certified Public Accountant. The Annual Report of the Environmental Fund for Arizona, including a summary of the audit and the most recent form 990 are available from our office or online at [www.guidestar.org](http://www.guidestar.org).

## New Members

The Environmental Fund for Arizona adds new organizations through a new member application and board vote process. New members must: devote substantial resources to working for the conservation, protection, or enhancement of the environment in Arizona, demonstrate at least two years of fiscal responsibility, and be incorporated as a non-profit, tax-exempt 501(c)(3) charity.

## Allocation of Contributions

Donations to Environmental Fund for Arizona are subject to a 11% average administration fee. The Environmental Fund for Arizona honors all employee designations for direct contributions to member groups.



## Board of Directors

A board of directors drawn from member groups and campaigns governs the Environmental Fund for Arizona.

### OFFICERS

**Bob Fox, President**  
**Richard MacLean, Vice President**  
**Lee Kohlhase, Treasurer**  
**Megan Mosby, Secretary**

### BOARD MEMEBERS

**Sam Campana – [scampana@audubon.org](mailto:scampana@audubon.org)**  
**Janet Ross – [jross@fourcornersschool.org](mailto:jross@fourcornersschool.org)**  
**Nancy Zierenberg – [nzberg4@cox.net](mailto:nzberg4@cox.net)**  
**Mark Rosati – [mark.rosati@pcmail.maricopa.edu](mailto:mark.rosati@pcmail.maricopa.edu)**  
**Linda Raish – [linda@mcdowellsonoran.org](mailto:linda@mcdowellsonoran.org)**  
**Solange Whitehead – [solangew@mlwsw.com](mailto:solangew@mlwsw.com)**



# ■ Environmental Fund for Arizona Campaign Application Form

## Company/City/County Profile

Your Name: \_\_\_\_\_

Company/City/County Name: \_\_\_\_\_

Address: \_\_\_\_\_

City/State/Zip: \_\_\_\_\_

Number of Employees: \_\_\_\_\_

Web Address: \_\_\_\_\_

Office location(s): \_\_\_\_\_

## Campaign Profile

Do you currently run an annual workplace giving campaign? \_\_\_yes \_\_\_no

If yes, please list the charities or federations that participate (United Way, CHC, etc.)

\_\_\_\_\_  
\_\_\_\_\_  
\_\_\_\_\_

What was the donation total for last year?: \_\_\_\_\_

What was the approximate employee participation last year?: \_\_\_\_\_

Who is the appropriate contact to discuss beginning a campaign?

Contact Name: \_\_\_\_\_

Contact Title: \_\_\_\_\_

Phone Number: \_\_\_\_\_

Email: \_\_\_\_\_

**Please complete and return form to:**  
Environmental Fund for Arizona  
610 E. Bell Rd., Suite 2-465  
Phoenix, AZ 85022



Or email to Laine Seaton, Executive Director: [laine@efaz.org](mailto:laine@efaz.org)

